



NI Centre for
**Pharmacy Learning
& Development**

FP2

Foundation Programme Part 2

*starting
September 2023*



NI Centre for
**Pharmacy Learning
& Development**

Post-Reg Team

(pharmacist development)

Laura O'Loan

Associate PG Pharmacy Dean

Leona Rogers

Senior Lead Post-reg - part-time

Claire McKeown

Senior Lead Post-reg - part-time

Anna Fay

Senior Lead Post-reg (Primary Care) - part-time

Jean Maginnes

Clerical Officer



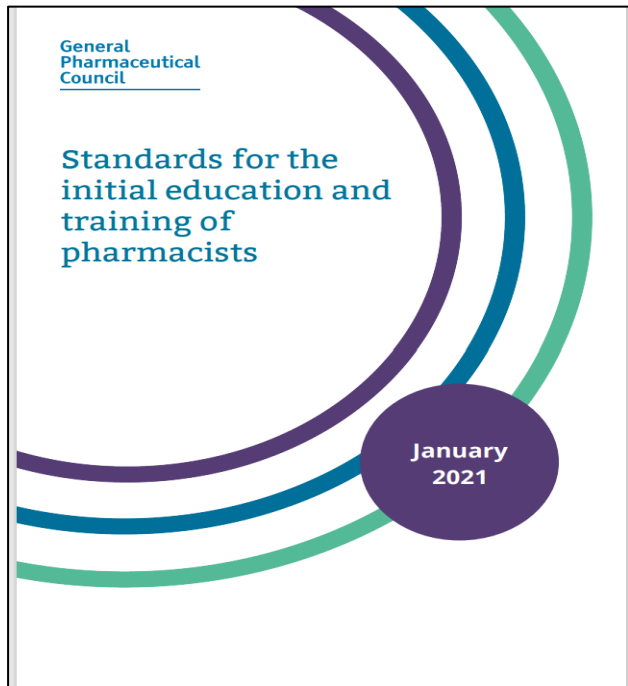
NI Centre for
**Pharmacy Learning
& Development**

Launch event – 23rd August 2023

****This event is being recorded****

- Structure of the new programme
 - *FP1 (started Sept 2022)*
 - *FP2 (starting Sept 2023)*
- Format + content of FP2 (see handbook)
 - *Application process*
 - *Practice activities*
 - *Portfolio*
 - *Webinars / workshops*
 - *ES / PS*
 - *Assessment*
- Q+A
 - *Scope does not cover employment issues*

Post Registration Training Plan

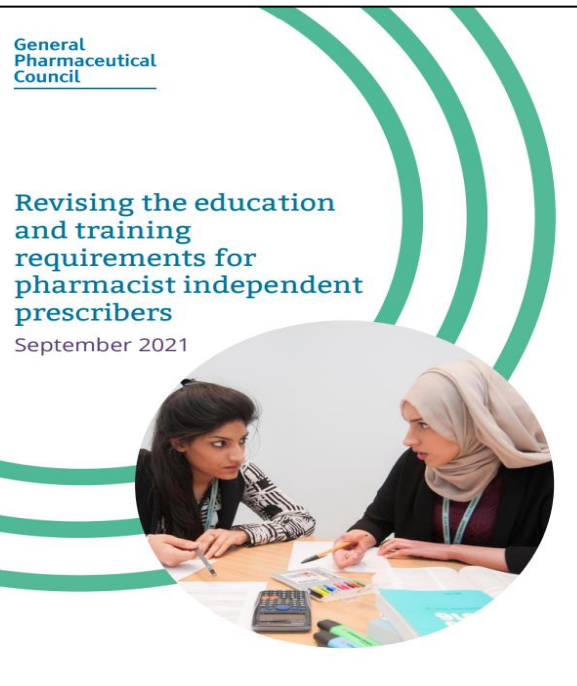


FTY/FP1

Pre- +/- or post-reg

Competent pharmacist

+



IP

Prescriber

+



FP2

Post-reg only

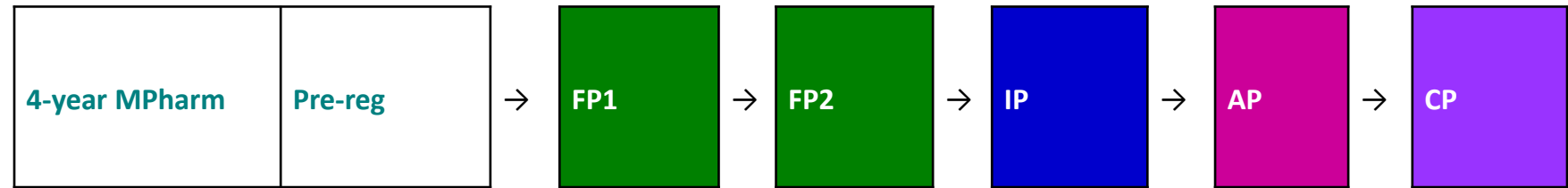
Proficient pharmacist
(+ prescriber)



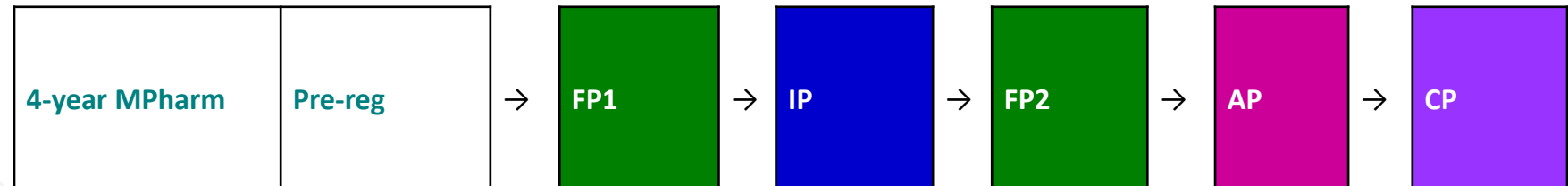
NI Centre for
**Pharmacy Learning
& Development**

Development pathway – legacy workforce:

Either:



OR:





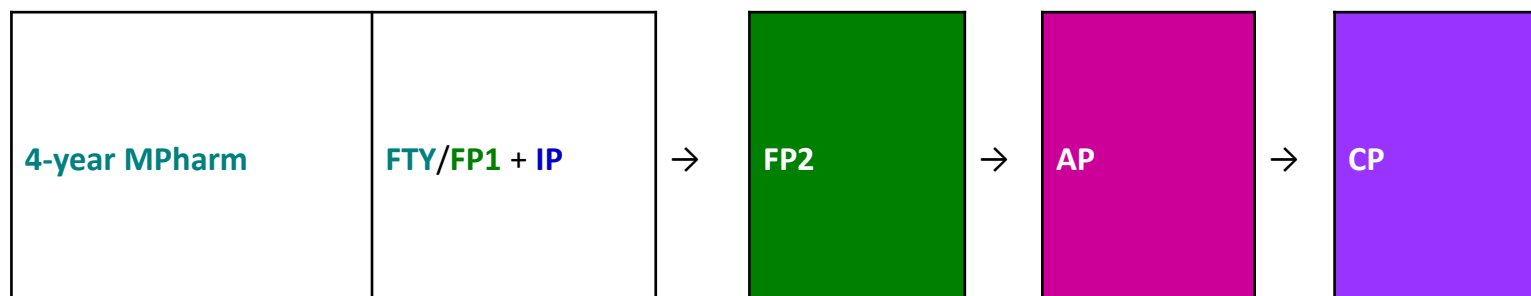
NI Centre for
**Pharmacy Learning
& Development**

Development pathway – new graduates: (graduating summer 2022 / registering summer 2023)



Development pathway – from 2025/6:

**From
2025/6:**





NI Centre for
**Pharmacy Learning
& Development**





NI Centre for
**Pharmacy Learning
& Development**

Format and Content of FP2

- Application Process
- Learning Outcomes
- Practice Activities
- Webinars / workshops
- Portfolio
- ES / PS
- Assessment

FP2 Application Process

- Open to patient-focused pharmacists working in Northern Ireland who have completed FP1
- Complete and submit an application form available at www.nicpld.org
- Applications accepted twice a year

Closing dates 2022/3:

- *Wed 30th August 2023 at 12 noon (start date 13th Sept 2023)*
- *Wed 10th January 2024 at 12 noon (start date 31st January 2024)*

Learning Outcomes

- 41 Learning outcomes to be met in FP2
- LOs are descriptions of specific knowledge skills or expertise expected by the end of the programme
- 2 practice areas **Proficient Patient Care** and **Evidence Based Practice**
- PPC helps pharmacists to move from being a competent pharmacist delivering safe and effective patient care to a proficient pharmacist providing holistic person-centred care. It prepares pharmacists to move on to the Clinical Pillar of Advanced Pharmacy Practice.
- EBP focuses on assessing and critically evaluating appropriate information to make evidence-based decisions in an efficient manner. It prepares pharmacists to move on to the Leadership, Education, and Research Pillars of Advanced Pharmacy Practice

Practice Activities

Proficient Patient Care

Practice activity	Description	Evidence required (recording templates are available on the NICPLD website)
Clinical review and medication plans	The pharmacist should record 5 clinical review & medication plans covering a range of patient types, including respiratory, CV, diabetes, cancer and infection. Patients should be complex patients with multi-morbidities and polypharmacy.	5 x clinical review and medication plans
Case based discussion (CbD)	The pharmacist should present one of the clinical review & medication plans as a case and discuss provision of patient care with colleagues.	1 x case based discussion
Patients interactions	The pharmacist should be observed undertaking a total of 5 patient interactions or clinical assessments covering a range of patient types, eg respiratory, CV, diabetes, cancer and infection.	5 x mini-CEX or DOPS
Clinical interventions	The pharmacist should reflect on 10 clinical interventions they have made. (include Eden scale)	10 x clinical intervention reflective records



Evidence Based Medicine

Practice activity	Description	Evidence required (recording templates are available on the NICPLD website)
Develop a personal development plan (PDP) for FP2	The pharmacist should develop a personal development plan (PDP) for FP2.	1 x completed PDP template
Clinical/medicines advice queries	The pharmacist should answer a minimum of 10 clinical/medicines advice queries satisfactorily.	10 x clinical/medicines advice queries answered satisfactorily
Introduction of a new service/ medicine/ product	The pharmacist should write a reflective account on their involvement in the process of introducing a new service, medicine, or product or into their workplace. (Hospital pharmacists may wish to write about a new product they have helped to introduce in technical services).	1 x Reflective record
Reflect on a teaching/learning activity	The pharmacist should reflect on a teaching/learning activity they have conducted for other learners, and use feedback from learners to adapt their approach.	1 x Reflective record (feedback from learners must be included)
Journal Club presentation	The pharmacist should present a journal paper to colleagues, demonstrating knowledge of research methods and critical evaluation skills.	Journal club presentation

Webinars/Workshops

13 Webinars/Workshops in total across the programme

- Induction
- Proficient Patient Care
- Respiratory Disease
- Effective Antimicrobial Use
- Cardiovascular Disease
- Diabetes
- Cancer and Supportive medicines
- Induction
- Quality Improvement
- Effective Professional Practice
- Critical Evaluation Skills
- Assessment Preparation
- Journal Club

Portfolio

- Contains all learning outcomes for you to map your evidence to
- Upload evidence from completed practice activities
- We ask you to assess your competence for each learning outcome at the start of the programme (T1) using the following assessment ratings

Assessment rating		Definition
0	I have yet to encounter an opportunity	I have not yet met the standard
1	I rarely meet the standard expected	I meet the standard approximately 0-24% of the time
2	I sometimes demonstrate the standard expected	I meet the standard approximately 25-50% of the time
3	I usually demonstrate the standard expected	I meet the standard approximately 51-84% of the time
4	I consistently demonstrate the standard expected (repeatedly and reliably)	I meet the standard approximately 85-100% of the time

Portfolio

- ePortfolio to upload evidence and score competence as time intervals



NI Centre for Pharmacy Learning & Development

Post-reg Foundation Programme Part 2

A
Proficient Patient Care
Status: Not started

B
Evidence-Based Practice
Status: Not started



A Proficient Patient Care



Competencies / Learning outcomes	T1	T2	T3	T4	Evidence
56 Systematically obtain a structured history, including mental health and collateral history, in sometimes difficult or challenging conditions (e.g. unreliable or incomplete sources of information); including but not limited to patient symptoms, concerns, priorities and preferences. Utilise all relevant sources of information including carers/family	+ 0 -	+ 2 -	+ 3 -	+ 4 -	
57 Demonstrate clinical reasoning by gathering focused information relevant to the person's care and according to the presenting situation	+ - -	+ - -	+ - -	+ - -	Practice Activities

Educational/Practice Supervisor

- Supportive Role
- Meet regularly to review progress
- Complete a final declaration to confirm portfolio suitable for submission
- Have at least 3 years experience post registration
- Must have completed NICPLD Effective mentoring online course
- Larger workplaces will involve practice supervisors who can support day to day learning and development

Assessment Process

- Foundation Portfolio review
- Submission Deadline cohort 1 15th May 2024
- Assessed by a foundation assessor who does not work in the same establishment but within the same practice area
- Minimum 10% will be double marked along with any fails
- All portfolios submitted for FPR **must meet these initial standards:**
 - all practice activities must have been completed;
 - the standard expected for each learning outcome (i.e. an assessment rating of 4) must have been achieved at the point of submission;
 - all learning outcomes must have at least one piece of evidence mapped to it.



NI Centre for
Pharmacy Learning
& Development

ANY
QUESTIONS



CONTACT US



Nicpld-postreg@qub.ac.uk

leona.rogers@qub.ac.uk